



Hard Chess Puzzle # 0109

By

G Bud Games
<https://gbud.in>

January 18, 2022

Contents

Hard Chess puzzle # 0109 - Mate in 2 moves	3
Hard chess puzzle 0109	3
Solution to hard chess puzzle 0109	4
Solution 1	4
Right moves for the solution to the hard chess puzzle 0109	7
Explanation for the moves	7
Categories of hard chess puzzle 0109	7
hard chess puzzle 0109 chart	8
How to view the solution to hard chess puzzle 0109	10
How to get help for moves in the hard chess puzzle 0109	11
Play chess for free	12

List of Figures

1	Solve this hard chess puzzle 0109. Mate in 2 moves @ https://gbud.in/gv3vp33	3
2	Solve this hard chess puzzle online with solution @ https://gbud.in/gv3vp33	3
3	Initial board position of hard chess puzzle 0109	4
4	g6	5
5	Rxc8+	5
6	Qxc8	6
7	Rxc8#	6
8	hard chess puzzle 109 chart 1	8
9	hard chess puzzle 109 chart 2	9
10	hard chess puzzle 109 chart 3	9
11	hard chess puzzle 109 chart 4	10
12	Click the solution button to view solutions @ https://gbud.in/gv3vp33	10
13	Click the help button to get help on next move @ https://gbud.in/gv3vp33	11
14	Solve more hard puzzles @ https://gbud.in/chshdpz	11
15	Solve other puzzles @ https://gbud.in/chsgppz	11
16	Play chess online for free. Solve puzzles and play with friends	12
17	Solve this puzzle online by scanning this QR code or go to the link below	13

Hard Chess puzzle # 0109 - Mate in 2 moves

Solve this hard chess puzzle and improve your chess games through improvement of your chess strategies and chess tactics. This hard puzzle is a subset of [kids games](#).

Puzzle No : 0109

Difficulty level : hard

Description : Mate in 2 moves

Next Move : White

Player level : Advanced

Short URL for puzzle : <https://gbud.in/gv3vp33>

Hard chess puzzle 0109

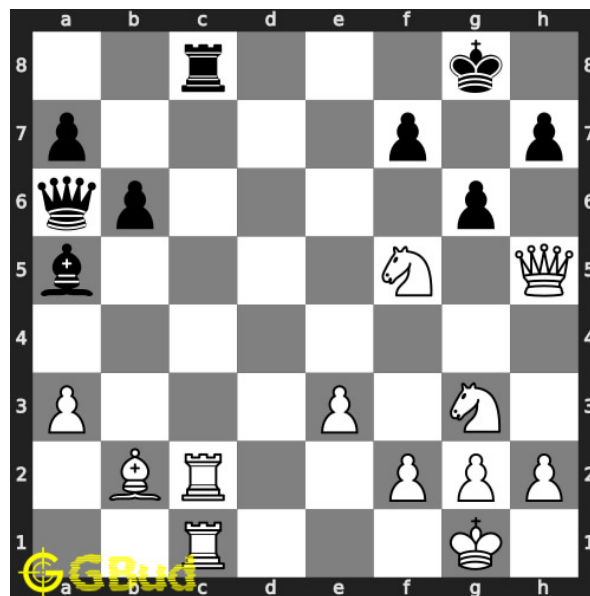


Figure 1: Solve this hard chess puzzle 0109. Mate in 2 moves @ <https://gbud.in/gv3vp33>



Figure 2: Solve this hard chess puzzle online with solution @ <https://gbud.in/gv3vp33>

Dont forget to check out [chess puzzles](#), [easy chess puzzles](#), [medium chess puzzles](#), [hard chess puzzles](#) and [chess puzzles collections](#) .

Solution to hard chess puzzle 0109

At this puzzle, next [move](#) is by [White](#). The objective of the puzzle is to mate in 2 moves.

See the interactive solution at the [puzzle page](#)

Solution 1

Initial board position This is the initial board position of hard chess puzzle 0109.

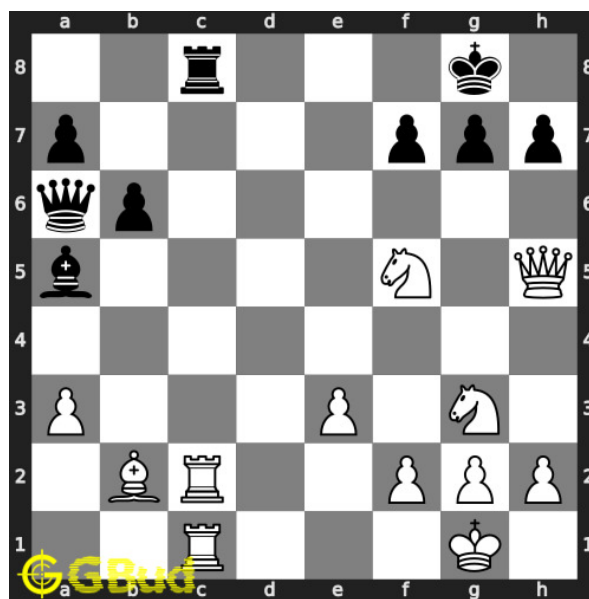


Figure 3: Initial board position of hard chess puzzle 0109

Move 1 Move by black

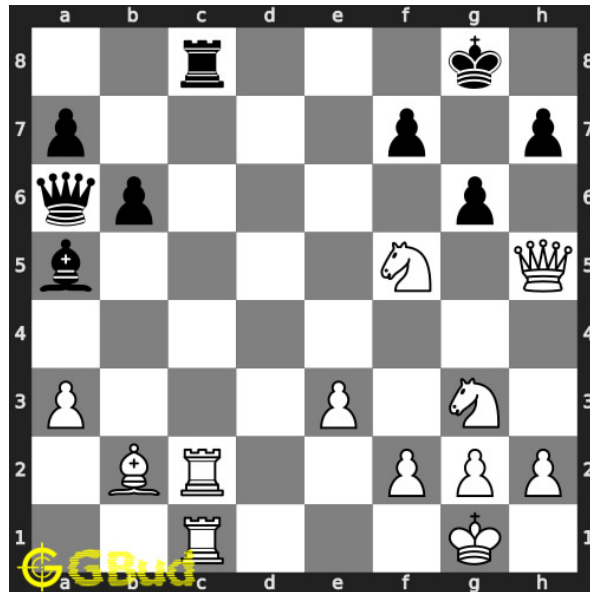


Figure 4: g6

opponent made mistake. they forks your queen and knight with a pawn so that they can gain one. however, they opened the diagonal for your bishop.

Move 2 Move by white

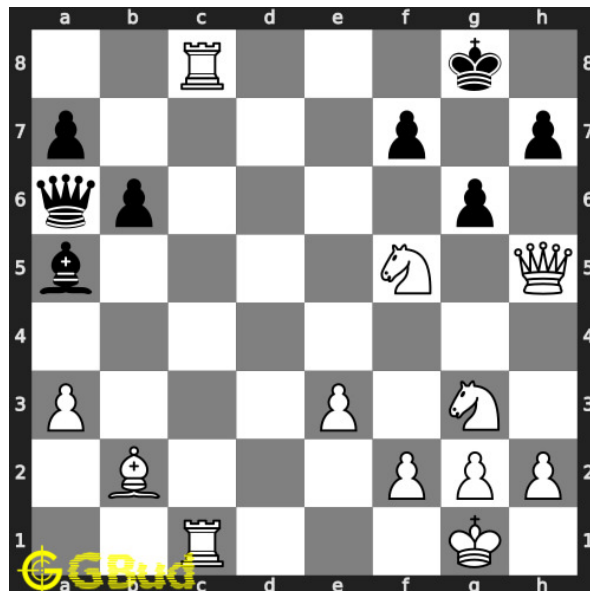


Figure 5: Rxc8+

your rook from the battery formation captures opponent's rook and gives check to opponent.

Move 3 Move by black

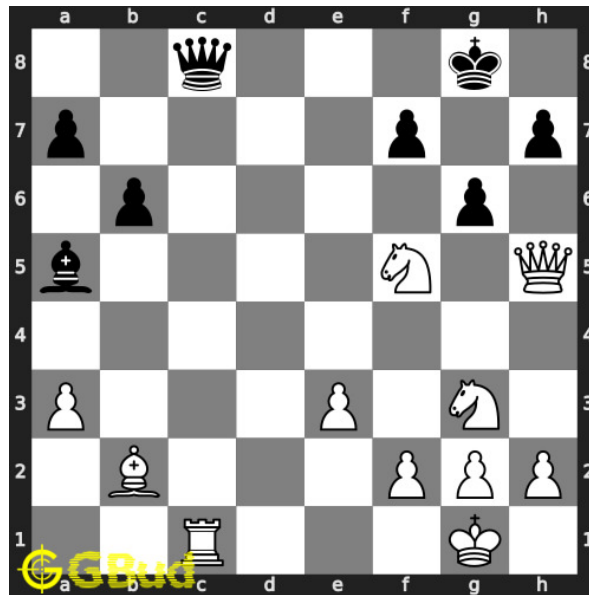


Figure 6: Qxc8

opponent's **queen captures** your **rook** as this is the only legal **move** available.

Move 4 Move by white

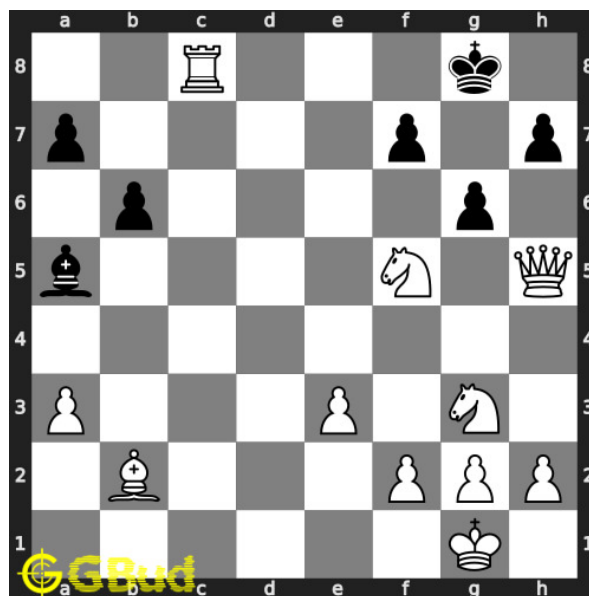


Figure 7: Rxc8#

your **rook captures** opponent's **queen** and **checkmate**. opponent's **king** can't **move** due to the attack from your **bishop**.. this is how you can **mate**

in 2 moves.

Right moves for the solution to the hard chess puzzle 0109

Based on the objective of the puzzle, you have to make the right moves. Following are the right moves

1. Rxc8+, Rxc8#

Explanation for the moves

1. g6 - Opponent made mistake. They forks your queen and knight with a pawn so that they can gain one. However, they opened the diagonal for your bishop.
2. Rxc8+ - Your rook from the battery formation captures opponent's rook and gives check to opponent.
3. Qxc8 - Opponent's queen captures your rook as this is the only legal move available.
4. Rxc8# - Your rook captures opponent's queen and checkmate. Opponent's king can't move due to the attack from your bishop.. This is how you can mate in 2 moves.
5. For right move - You used the opponent's mistake and your battery formation effectively. Your attempt is good.
6. For wrong move - You could have won after sacrificing your rook. Try again

Categories of hard chess puzzle 0109

This hard chess puzzle falls in these categories.

1. [Hard chess puzzles](#)
2. [Sacrifice puzzles in chess](#)
3. [Endgame puzzles in chess](#)
4. [Fork puzzles in chess](#)
5. [Battery puzzles in chess](#)
6. [Strategy puzzles in chess](#)
7. [Rook puzzles in chess](#)

hard chess puzzle 0109 chart



Figure 8: hard chess puzzle 109 chart 1



Figure 9: hard chess puzzle 109 chart 2



Figure 10: hard chess puzzle 109 chart 3

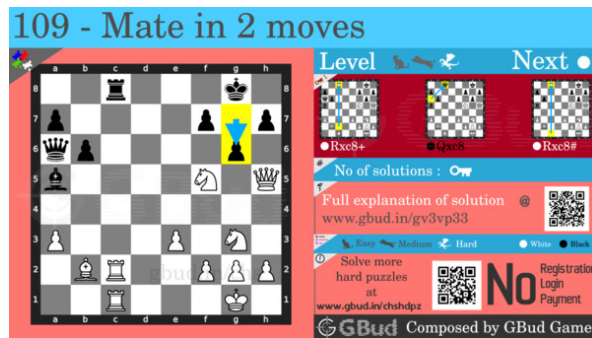


Figure 11: hard chess puzzle 109 chart 4

How to view the solution to hard chess puzzle 0109

To view the [solution to this puzzle](#), follow the steps given below

1. Go to the [puzzle page](#)
2. Click the solution button (Key as shown [below](#)) to view the solution



Figure 12: Click the solution button to view solutions @ <https://gbud.in/gv3vp33>

How to get help for moves in the hard chess puzzle 0109

To get help or the possible next moves in the puzzle, , follow the steps given below

1. Go to the [puzzle page](#)
2. Click the help button (exclamation mark as shown [below](#)) to get help or suggestion on next possible [move](#)



Figure 13: Click the help button to get help on next move @ <https://gbud.in/gv3vp33>



Figure 14: Solve more hard puzzles @ <https://gbud.in/chshdpz>



Figure 15: Solve other puzzles @ <https://gbud.in/chsgppz>

Play chess for free

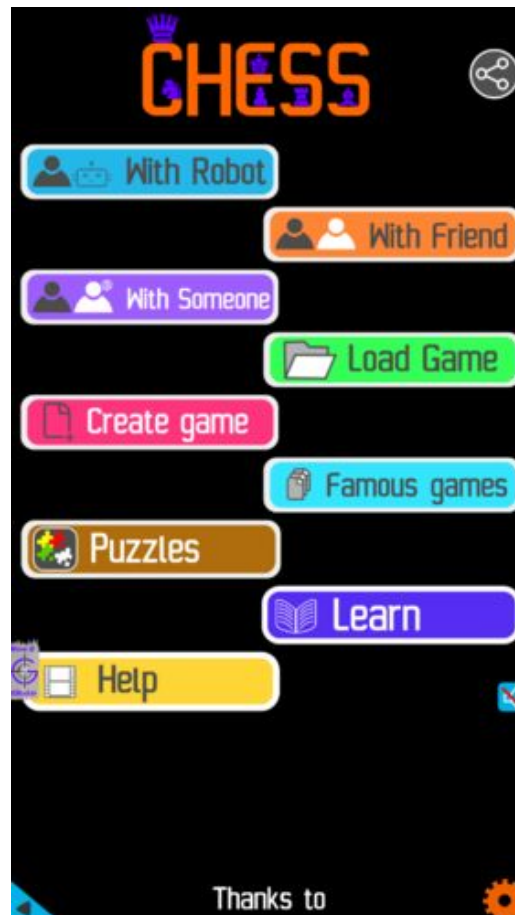


Figure 16: Play chess online for free. Solve puzzles and play with friends

Play chess for free at <https://gbud.in/chs>

We present you a platform to play chess online with friends for free. No need to install any app. You can play chess for free without registration or login.

Simple. You can do several chess related activities.

1. solve chess puzzles
2. learn about chess
3. play chess with computer
4. play chess with friend
5. create your own chess games

6. [fen viewer](#)
7. [fen editor](#)
8. [fen generator](#)
9. [pgn viewer](#)
10. [chess board editor](#)
11. [view famous chess games.](#)



Figure 17: Solve this puzzle online by scanning this QR code or go to the link below

<https://gbud.in/gv3vp33>

Read the latest article on Hard Chess puzzle # 0109 - Mate in 2 moves by scanning this QR code or click the link

Previous article : [« Hard Chess puzzle # 0108 - Gain opponent's queen in 3 moves](#)

Next article : [Hard chess puzzles »](#)

[Back to top](#)

[Contact Us](#)